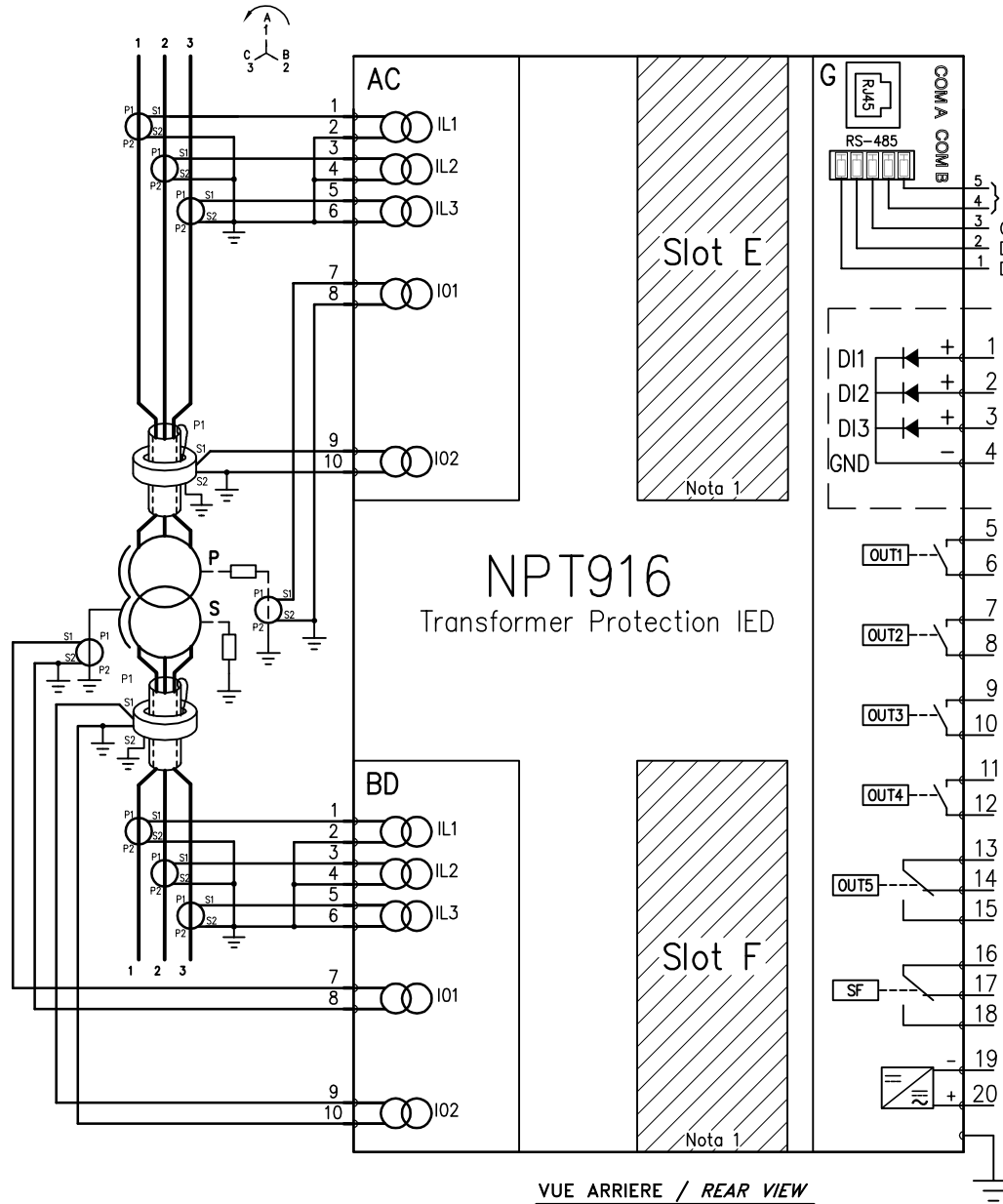


MONTAGE MOUNTING	
P	Montage sur panneau / Panel mounted
TENSION AUXILIAIRE AUXILIARY SUPPLY	
L	AUX.1 18...72 V \approx
H	AUX.2 80...265 V \approx
PRECISION DE MESURE PUISSANCE ET ENERGIE ENERGY AND POWER MEASUREMENTS ACCURACY	
8	CLASSE NON APPLICABLE CLASS NOT APPLICABLE
ENTREES LOGIQUES - CARTE G DIGITALS INPUTS - G CARD	
A	24V
B	3 Ent. logiques / Digital Inputs 110V
C	220V
D	2 Ent. logiques / Digital Inputs 24V
E	110V
F	[74TC]Choix obligatoire / Mandatory choice 220V
CARTES OPTIONS (Nota 2) OPTION CARDS (Note 2)	
B	8 Ent. Logiques/Digital Inputs
C	5 Sort. Relais/Output Relays (2max.)
D	Protoc. d'Arc/Arc Protection (1max.)
F	8x RTD Input (2max.)
J	2x LC 100Mb Eth (Optic fiber)
L	Serial Fiber (PP)
M	Serial Fiber (PG)
N	Serial Fiber (GP)
O	Serial Fiber (GG)



Nota 1: Cartes options cf. S42506 / Option Cards cf. S42506
 Nota 2: Un seul choix par colonne / One choice per column

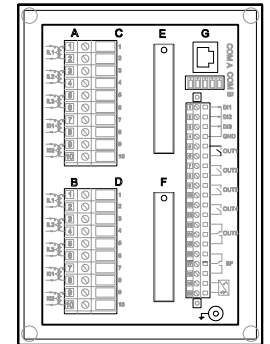
NP900

PROTECTION NUMERIQUE NUMERICAL PROTECTION

ANSI

[50/51]-[50N/51N]-[50H/51H/68H]
 [46R/46L/46]-[87N]
 [87T]-[49T]
 [50BF/52BF]-[74TC]

BORNIER / TERMINALS
(vue arrière) / (rear view)



NPT916

B	Le 29.03.17 VDL	DESSINE	VERIFIE	N° CAO
A	Diffusion Le 30.01.17 SSo	SSO	EFR	5144



SCHEMA DE RACCORDEMENT
CONNECTION DRAWING

S 42469

1/1

C Le 01.08.17 VDL